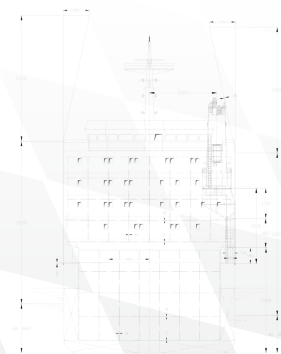


M/V NORDIC KYLIE

MULTI-PURPOSE DRY CARGO SHIP
EQUIPPED FOR CARRIAGE OF CONTAINERS
DWT 12,760.00 t



 MINSHIP



www.MINSHIP.com

MAIN PARTICULARS (ALL FIGURES ABOUT)



M/V NORDIC KYLIE - MULTI-PURPOSE DRY CARGO SHIP

IMO	9357999
Flag	Liberia
Port of Registry	Monrovia
Official No.	92982
Year of Built Yard	2005 Qingshan Shipyard, Wuhan
Class Society	BV
Classification	General cargo ship -euipped for carriage of containers -heavycargo (Maximal local load on inner bottom: 15 kN/m2) Unrestricted navigation AUT-UMS, MON-SHAFT, ICE CLASS IA, INWATERSURVEY
LOA	138.07 m
LBP	130.00 m
Beam	21.00 m
Draft	11.00 m

Tonnage	GT 9,611	NT 4,260
Deadweight	12,760.00 t	
Main engine	MaK 6M43	
ME Power	5400 kW	
Holds	3 holds	

No. of TEU	No. of TEU on Deck	No. of TEU in Holds
665	331	334

Crane Capacity No. 1	120 t
Crane Capacity No. 2	120 t

Hold size	cap. exc. TWD	TWD
No. 1	2,646 cbm	2,495 cbm
No. 2	8,200 cbm	7,759 cbm
No. 3	4,791 cbm	4,523 cbm
Total	15,637 cbm	14,777 cbm

