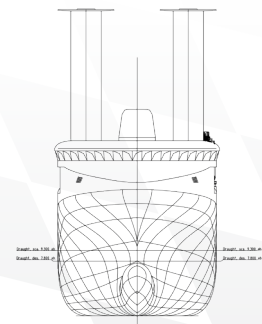


M/V E-SHIP 1

MULTI-PURPOSE SHIP
RORO
DWAT 10,020.49 t



M MINSHIP



www.MINSHIP.com

MAIN PARTICULARS (ALL FIGURES ABOUT)



M/V E-SHIP 1 - MULTI-PURPOSE SHIP, RORO

IMO	9417141
Flag	Germany
Port of Registry	Emden
Official No.	5734
Year of Built	2010
Yard	Cassens Werft Germany
Class Society	DNV
Classification	100 A5 E3 Multi-purpose dry cargo ship BWM Equipped for carriage of containers SOLAS-II-2, Reg. 19 G IW Equipped for carriage of ro-ro-cargo Strengthened for heavy cargo, MC E3 AUT EP-D RCP (46/100)
LOA	130.42 m
LBP	123.00 m
Beam	22.50 m
Draft	11.30 m

Tonnage	GT 12,968	NT 8,907
Deadweight	10,020.49 t	
Main engine	5x Caterpillar 3508 2x Caterpillar 3512	
ME Power	6,614 kW	
Holds	1 hold	

Hold size	cap. exc. TWD	TWD
No. 1	20,766 cbm	18,686 cbm
Total	20,766 cbm	18,686 cbm

No. of TEU	No. of TEU on Deck	No. of TEU in Holds
847	400	447

Crane Capacity No. 1	90 t
Crane Capacity No. 2	90 t

